

# RILEY COUNTY HISTORICAL SOCIETY

Since 1914

Contact us at: 2309 Claflin Road Manhattan, Kansas 66502

785-565-6490

[www.rileychs.com](http://www.rileychs.com)

RGHS Newsletter

Vol. LXIV No. 1

January/February 2023

## ***Hello and Greetings!***

It is an exciting season for the Riley County Historical Society and Museum as we usher in 2023 with renewed energy, new faces, programs, and plans. I first wish to sincerely thank our members, our volunteers, our community, and County leadership for rallying around the Museum over the course of the past three years. Between Covid and the many challenges we've encountered, we are happy to see some light at the end of the tunnel. Thank you for supporting our staff and Board, and for welcoming me and the new staff members to our roles here.



With new faces come new ideas and some change! As we look towards a fresh vision for the Museum and the Society, you will begin to see updates being made to our membership program, educational and outreach offerings, exhibits, and to the facilities. With these changes, we insist on keeping the Society and Museum's mission at the forefront and serving as responsible custodians of our County's historical and cultural resources. I look forward to meeting and working with each of you, and I welcome any feedback you may have. Here's to a new year with wonderful and exciting opportunities for education, preservation, and stewardship in our community.

Kind Regards,

Katharine Hensler, RCHM Director

## ***RCHS Communications Committee***

The RCHS bi-monthly newsletter is a product of collaboration between the RCHS Communications Committee, RCHM staff members, and our dedicated volunteers. Newsletter Production - Lisa Jones, RCHM. RCHS Communications Committee – Gloria Freeland (chair), Janet Duncan, Margaret Pendleton, Mary Stamey. The committee has been busy working writing articles for the *Manhattan Mercury's* "Weekend Club News," section; overseeing updates to the society's branding program (logo, website, etc.); content creation and editing of this bi-monthly newsletter, which has been on hiatus since the COVID-19 pandemic. The committee wants to thank Lisa Jones and other Museum staff people for their work on the newsletter's content creation, graphics, formatting, editing, and distribution coordination. We look forward to our upcoming editions and welcome any ideas you might have for future articles (in the newsletter, the *Mercury*, and social media (follow us on Facebook!)).



*Postcard courtesy Riley County Historical Society and Museum*

## ***Valentine's Day greetings over the years***

By Gloria Freeland

The Riley County Historical Museum, located at 2309 Claflin Road, has a collection of hundreds of Valentine's Day postcards.

Every Feb. 14, people give cards, candy, flowers and gifts to loved ones in the name of St. Valentine. The Greeting Card Association estimates one billion Valentine's Day cards are exchanged each year, making it the second-most popular holiday for sending cards after Christmas.

According to history.com, the holiday's namesake is officially known as St. Valentine of Rome to differentiate him from the dozen or so other Valentines on the Roman Catholic list of saints. One of the theories surrounding the mid-February Valentine celebration may have been to "Christianize" the pagan celebration of Lupercalia, a fertility festival dedicated to Faunus, the Roman god of agriculture.

Valentine greetings were popular as far back as the Middle Ages, and the oldest-known valentine still in existence was a poem written in 1415 by Charles, Duke of Orleans. It was written to his wife while he was imprisoned in the Tower of London.

Americans probably began exchanging hand-made valentines in the early 1700s. In the 1840s, Esther A. Howland, known as the "mother of the valentine," began selling the first mass-produced valentines in America made with real lace, ribbons, and colorful pictures. By 1900, printed cards began to replace letters because of improvements in printing technology.

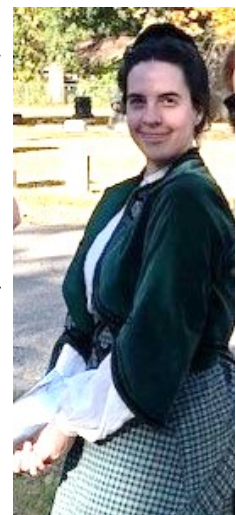
Although Valentine's Day has changed over the years, people still mark the holiday in heartfelt ways. Whether by sending cards, going out for special meals, giving flowers, candy or jewelry or celebrating friendship, it is a day set aside to commemorate loved ones.

*Gloria Freeland is an emeritus professor in the A.Q. Miller School of Media and Communications, and she is a member of the Riley County Historical Society board. Portions of this article originally appeared in the Feb. 17, 2019 Manhattan Mercury.*

## ***Sunset Cemetery Tour Recap***

Staff and volunteers of the Riley County Historical Society and Museum held an interpretive walking tour of Sunset Cemetery on Saturday, October 22. The event was advertised in the local media and online and we had 60 patrons attend the tour. There were several costumed presenters sharing information about such varied historical figures as Amanda Arnold, Julia Lovejoy, and a Civil War soldier (who also played a military funeral march on his fife). Others told some of the history of Riley County notables such as the Marlatt and Strong families, and of the 'Red-headed Music Maker' Wendell Hall, who recorded the song "Ain't Gonna Rain No More." The group was also led in singing the song at the end of the presentation.

**Many thanks** to the interpreters: Melanie Highsmith (pictured, right) as Amanda Arnold, Allana Parker as Julia Lovejoy, Derrick Doty as 'soldier,' and the presenters Rachelle Routh, Charlie and Sharlin Sargent, and Robert Rosenberg, along with many volunteers and staff members.



## Christmas Open House Recap

A Christmas Open House was held Sunday, December 18 from 2-5 pm at the Wolf House Museum. Nearly three dozen visitors came to view the festive decorations and learn some of the history of the house. We appreciate the historic knowledge and holiday cheer shared by our staff and volunteers! Wolf House is open Saturdays and Sundays from 2-5 p.m. Admission is free.



*Wolf House tour guide Tim Sidorfsky shares fun facts about the cone of sugar and other interesting kitchen artifacts.*

## Curator's Corner by Linda Glasgow, Curator of Archives/Library

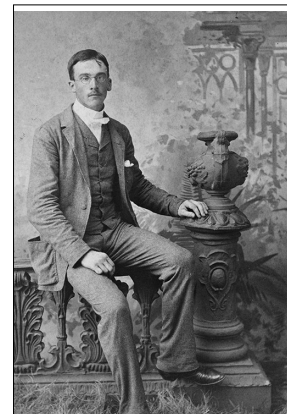
As a new college semester begins here in Manhattan, the story of a certain special Kansas State Agricultural College student comes to mind: Sir Stuart Hogg, president of the British Land and Mortgage Company of America, Ltd., arrived in Manhattan in the summer of 1883 along with his eighteen-year-old son, Stuart James Hogg. Sir Stuart had recently allied his new company with local financier, E.B. Purcell, and before returning to England, Sir Stuart enrolled his son as a special student at KSAC.

Young Stuart was able to complete the three terms of the 1883-1884 school year. He enrolled in the 1884 fall term, but withdrew in early December after being called home to London for the holidays. Stuart returned to Manhattan in February 1885 and began taking on some of the responsibilities for the British Land and Mortgage Company. He left for England again in November of 1885. On his return voyage to America in January 1886, Stuart met a young woman named Margaret Alice Muir, who was later to become his wife.

In January of 1890 Stuart took over as agent and manager of the British Land and Mortgage Company and established an office in downtown Manhattan. In June 1890, he again traveled to England and returned to Manhattan on October 9th, accompanied by his bride, Margaret Alice.

Mrs. Hogg started a journal on her wedding day, September 9, 1890 describing life for the newlyweds in Manhattan. The journal ends in 1891. An article about the journal appeared in the Kansas Historical Society's **Kansas Quarterly** in August Of 1951 and is available online at: [www.kshs.org/p/kansas-historical-quarterly-august-1951/17525](http://www.kshs.org/p/kansas-historical-quarterly-august-1951/17525).

*Photos (top to bottom): Stuart Hogg as a KSAC student, and Mr. and Mrs. Hogg on their wedding day. The photographs are housed in the collection of the Riley County Historical Society and Museum.*



### ***Upcoming Schedule of Events***

January 29 – Kansas Day Open House at the Museum, 3-5pm, free to the public

February 8 – RCHS Board of Directors Meeting, Manhattan Senior Center, 3:30-4:30pm

February 12 — Submission deadline for March/April newsletter

February 18 – Volunteer Recognition and Meet & Greet at the Manhattan Public Library, 10-11:30am, free and open to all

March 8 – RCHS Board of Directors Meeting, Manhattan Senior Center, 3:30-4:30pm

April 18 – RCHM Board of Trustees Quarterly Meeting, Manhattan Senior Center, 4-5pm

April 21 – Grow Green Match Day, Greater Manhattan Community Foundation (and online), 12am – 11:59pm

May 6 – Flint Hills Festival, Blue Earth Plaza, 10am-5pm

**➡ Follow us on Social Media at [www.facebook.com/RileyCountyHistoricalMuseum](https://www.facebook.com/RileyCountyHistoricalMuseum)**

## **Riley County Historical Society Board of Directors-2023**

President

**Debbi Thompson**

Vice-President

**Mary Mertz**

Immediate Past President

**Dori Milldyke**

Recording Secretary

**Lynne Berry**

Corresponding Secretary

**Colene Lind**

Membership Secretary

**Margaret Pendleton**

Treasurer

**Janet Duncan**

Program Chair

**Carol Hockersmith**

Directors Through 2023

**Robert Haines**

**Mary Stamey**

**Judy Kimball**

Directors Through 2024

**Dave Baker**

**Gloria Freeland**

**Andy Larson**

Directors Through 2025

**Brad Hartenstein**

**Janet Lowell**

**Janice Reitz**

***Join our digital mailing list by emailing [info@rileychs.com](mailto:info@rileychs.com)***

