

The Riley County Historical Society and Museum

2309 Claflin Road Manhattan, Kansas 66502 Telephone: (785) 565-6490 On the web: www.rileychs.com

RCHS NEWSLETTER

VOL. LXI, NO. 2

April 2013

RCHS Dinner Meeting Monday, April 29, 6:30 p.m.

At Pottorf Hall, CiCo Park, Manhattan

1710 Avery Avenue, off of Kimball Avenue, across from the Candlewood Shopping Center

MENU: Catered by Ray's Apple Market

- Beef Brisket
- Baked Beans
- Tossed Salad
- Rolls with Butter
- Cookies and Brownies
- Pink Lemonade or Decaf Coffee

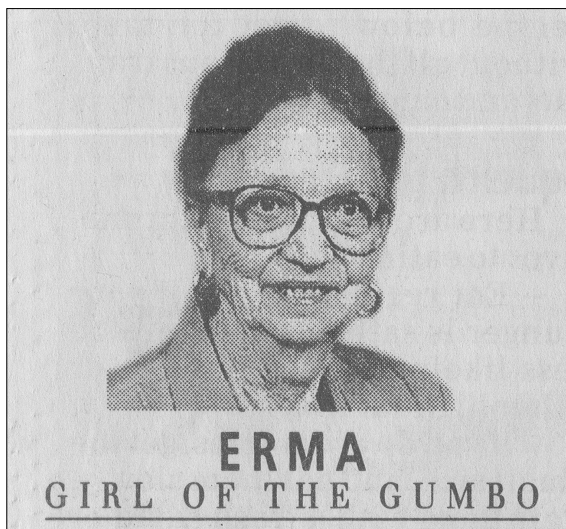
COST: \$12.00

Reservations for Dinner: Please call the Museum at 785-565-6490 by Monday, **April 22**.

(If it is necessary for you to cancel after the reservation deadline, please let us know as soon as possible. If we can fill your place, we will not charge you for the cancellation.)

Everyone is welcome to attend the program at no charge.

No reservation is necessary for the program, which will start about 7:15 p.m.



Program: Girl of the Gumbo

Stories about humorist Erma F. Sebring, a long-time Manhattan Mercury columnist who wrote as "Girl of the Gumbo."

K-State 150th Brown Bag Lunch & Lecture Series

This free lecture series features various speakers and historical topics. Please check the website www.k-state.edu/150 for Lecture series updates. Here is the schedule through August 2013:

Wed. April 3, 2013, noon-1 p.m. History & Highlights of the K-Stater Magazine

Location: KSU Hale Library, 5th floor Hemisphere Room

Speaker: Tim Lindemuth, former Editor of the K-Stater magazine

Wed. April 10, 2013, noon-1 p.m. Making History: How K-State Olathe Wrote a New Chapter for Higher Education

Location: K-State Student Union -- Big 12 Room

Speaker: Karin Brownlee, Former Kansas Legislator & Secretary of Labor

Wed. April 17, 2013, noon-1 p.m. Past, Present & Future of Graduate Education at K-State

Location: K-State Student Union -- Flinthills Room

Speaker: Dr. Robert Kruh & Dr. Carol Shanklin, Dean, Graduate School

Wed. April 24, 2013, noon-1 p.m. 100 Years of Animal Science & Industry/College of Agriculture

Location: KSU Hale Library, 5th floor Hemisphere Room

Speaker: Dr. Miles McKee, Emeritus Professor, Animal Sciences & Industry

Wed. May 1, 2013, noon-1 p.m. From Women's Course to Human Ecology

Location: K-State Student Union -- Flinthills Room

Speaker: Carol Kellet, Professor, College of Human Ecology

Wed. May 8, 2013, noon-1 p.m. Frontier Manhattan

Location: KSU Hale Library, 5th floor Hemisphere Room

Speaker: Kevin G.W. Olson / Libraries

Wed. May 15, 2013, noon-1 p.m. History of Women Leaders

Location: K-State Student Union -- Flinthills Room

Speaker: Pat Patton

Wed. May 22, 2013, noon-1 p.m. The Man Behind the House

Location: K-State Student Union -- Big 12 Room

Speaker: Dr. Steven Short

Wed. May 29, 2013, noon-1 p.m. May the Circle be Unbroken: K-Staters in Sunset Cemetery

Location: SUNSET CEMETERY, Manhattan, KS (meet at front gate)

Speaker: Cheryl Collins, Director, Riley County Historical Museum

Wed. June 5, 2013, noon-1 p.m. Distance Education Through the Years

Location: KSU Hale Library, 5th floor Hemisphere Room

Speaker: Sue Maes, Dean, Continuing Education

Wed. Aug. 7, 2013, noon-1 p.m. African-American Vet Med Graduates

Location: K-State Student Union -- Flinthills Room

Speaker: Ronnie Elmore, Assoc. Dean, College of Veterinary Medicine

Wed. Aug. 14, 2013, noon-1 p.m. History of K-State Aviation

Location: K-State Student Union -- Big 12 Room

Speaker: Kurt Barnhart / K-State Salina

Wed. Aug. 21, 2013, noon-1 p.m. Teatime to Tailgates

Location: K-State Student Union -- Flinthills Room

Speaker: Jane Marshall / College of Human Ecology



Cory Rentas of Bob's Plumbing,
hard at work.

Wolf House Update!

The Riley County Historical Society is honored and grateful to receive a \$6,000.00 grant from the **Manhattan Fund - Caroline F. Peine Charitable Foundation** toward the restoration of the Wolf House Museum east bedroom. The Peine Foundation grant will be matched by donations from the **Friends of the Wolf House Museum** to complete this project. The Society is very grateful to the Friends of the Wolf House Museum for their continued support.

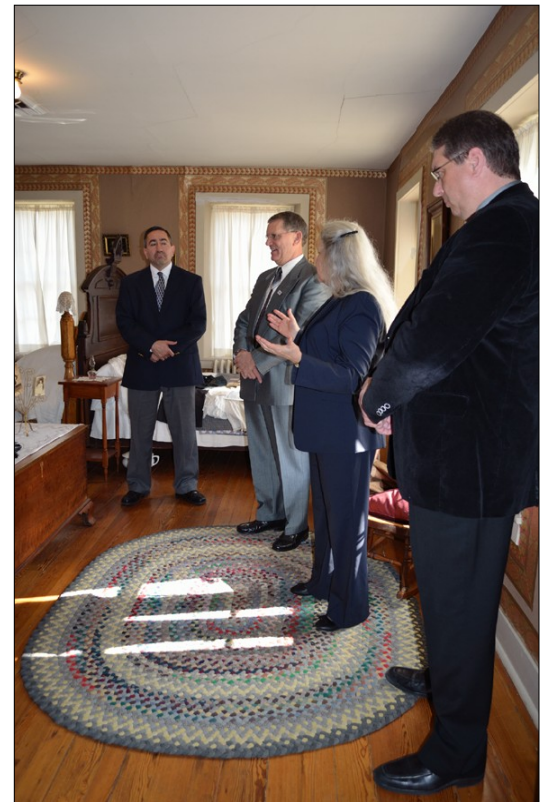
When this restoration project is completed, the whole of the original part of the Wolf House will be done. That is a significant milestone and we are thrilled that our restoration efforts have come so far through the help of the Peine Foundation and the many faithful donors to the Wolf House Museum.

The Wolf House Museum closed February 23 and will reopen when the work is completed in the fall of 2013.

We recorded how the room looked at the very beginning of the project, removed a modern bathroom addition, researched and documented the clues laid bare during the work, researched historically appropriate treatment for walls, ceiling, windows and floor, and repaired ceiling, walls, window casements and floor. We will also re-paint all the woodwork and windows, and install historically accurate wallpaper on the walls and ceiling. Finally, the house will be cleaned, and the secured collections will be put back into place. It is a big job but the restoration will make it possible to step back into the 1880's and get an all encompassing look at our past. We have seen what a difference restoration has made in the foyer, dining room, parlor and west bedroom and we are very excited to see the change in the east bedroom.

Edna Williams, Curator of the Wolf House Museum, Corina Hugo, Riley County Historical Museum Curator of Collections, Museum staff, and all the contractors are working hard, and we think it will be worth the physical effort and the financial cost.

Mrs. Lucile Wolf gave the Wolf House Museum and its wonderful furnishings to the Riley County Historical Society in 1982 and the Museum opened in 1983. Partial funding for the operation of the Wolf House Museum is provided by the City of Manhattan.

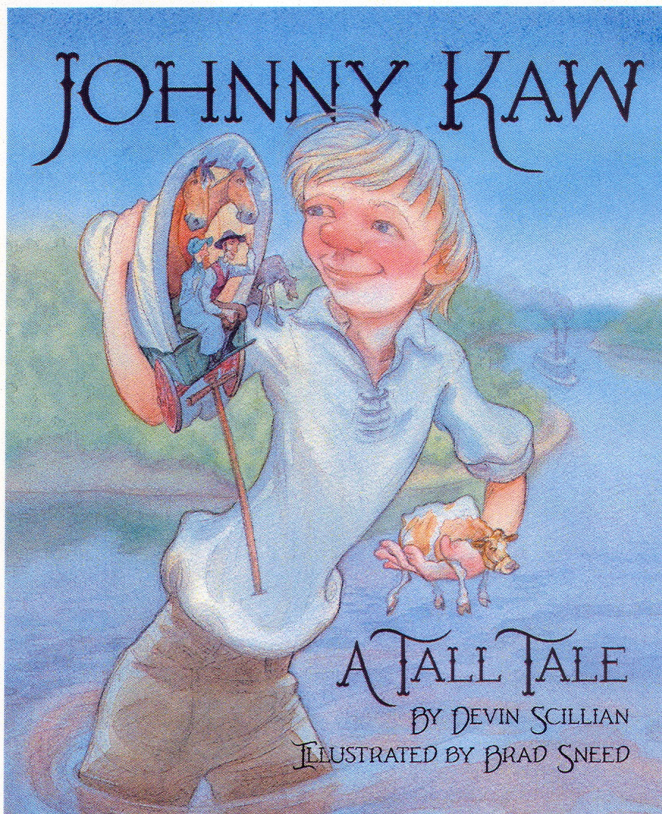


Museum Director Cheryl Collins explained the east bedroom project to Riley County Commissioners Dave Lewis, Bob Boyd, and Ron Wells and County Clerk Rich Vargo on their February 4th visit to the Wolf House.

*The Riley County
Historical Society and Museum
2309 Claflin Road
Manhattan, Kansas 66502*

Non-Profit Org.
U.S. Postage
PAID
Permit No. 407
Manhattan, KS
66502

Address Service Requested



New Johnny Kaw Book Out!

On **Saturday April 13 at 2:00 p.m.**, noted Kansas author/illustrator Brad Sneed will be at the **Manhattan Public Library** to discuss his new book "Johnny Kaw: A Tall Tale." The book was written by Devin Scillian and illustrated by Brad Sneed. The program is free and everyone is invited to attend. Claflin Books and Copies will have books available.

This new book fills a different niche than does the book "Johnny Kaw" by Jeri Garretson (now out of print) and the book "Kansas Tall Tales" which includes "Johnny Kaw: The Pioneer Spirit of Kansas" written by Jeri Garretson and illustrated by Diane Dollar (who both grew up in Manhattan.)

We are proud to offer Jeri's books (including "Kansas Tall Tales") in our book shop at the Riley County Historical Museum. More about the original Johnny Kaw book and Jeri's books is available at www.ravenstonepress.com.