



2309 Claflin Road Manhattan, Kansas 66502 Telephone: (785) 565-6490

[www.rileychs.com](http://www.rileychs.com)

RGHS NEWSLETTER

VOL. LXIV NO. II

October 2016

## Riley County Historical Museum Centennial Celebration at Pottorf Hall



Riley County Historical Museum

### *Your Invitation:*

Come celebrate the **100th anniversary** of the **Riley County Historical Museum** Wednesday, **October 5th**, at **7:00 p.m.** at **Pottorf Hall**, CiCo Park, 1710 Avery Drive, Manhattan. The birthday party is free and everyone is invited to attend. In addition to a brief program, there will be refreshments and a drawing for prizes.

The Riley County Historical Association, now known as the Riley County Historical Society, dedicated its first Museum, the Pioneer Log Cabin in Manhattan's City Park, on October 5, 1916. The Log Cabin has remained in continuous use as a museum since that time. In 1957 the Museum expanded to additional, larger quarters in the basement of Manhattan's City Hall. The current Riley County Historical Museum was built by the County of Riley in 1976 at 2309 Claflin Road, Manhattan, as a Bicentennial project and opened in 1977. An addition doubled the size of the museum in 1986.

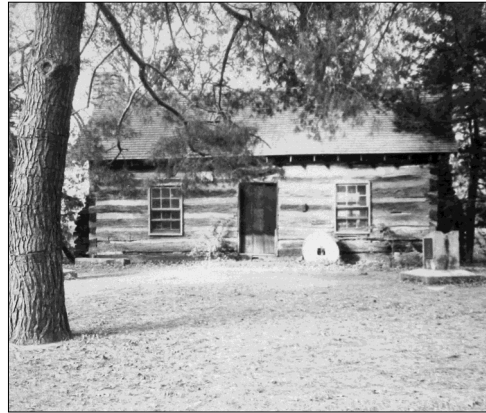
The Claflin Road museum building is open to the public Tuesdays through Fridays 8:30 a.m. to 5:00 p.m. and Saturdays and Sundays 2:00 to 5:00 p.m. (excluding holidays). A research archive/library is open by appointment at 785-565-6490. Admission is free.

# Riley County Historical Museum

## Pictorial Timeline



1914 Historical Association (Society)  
founded.  
1915 Log Cabin construction began.



Pioneer Log Cabin dedicated October 5, 1916.  
Used as museum from dedication to present.  
Photo dates from after cannons were  
removed for WWII scrap metal drive.



1957 City Hall basement provided exhibit  
space for twenty years.



1976 July 4th groundbreaking for  
Museum at 2309 Claflin Road.

## Centennial Exhibit

A new exhibit, "Celebrating 100 Years of History and Heritage: The Riley County Historical Museum," opens October 13th, 2016, and will run through 2017.

The exhibit will showcase over 100 artifacts and photographs significant to the history of the Riley County community. These notable objects include a section of the original theater seats from the Wareham Opera House, a penny-farthing bicycle owned by Guy Varney, and a hand-carved sunflower clock made from local wood for the World's Columbian Exposition in Chicago in 1893. Many of the objects in the exhibit have rarely been showcased.

A series of programs will accompany the exhibit over the course of its run. Please watch for announcements or check the calendar at [www.rileychs.com](http://www.rileychs.com).

The Riley County Historical Museum is open 8:30 a.m. to 5:00 p.m., Tuesdays through Fridays, and 2:00 to 5:00 p.m. on Saturdays and Sundays (except holidays). Admission is free.

## Calling All Riley County Historical Society Members—Present, Past and Future!

**When:** Sunday, October 2, 2016, 4:00 p.m.

**Where:** In front of the **Pioneer Log Cabin in Manhattan City Park.** (Park in the swimming pool back lot.)

**Why:** We will take a **photograph** of Riley County Historical Society members/friends 100 years after the Society opened the Pioneer Log Cabin as its first museum, just as RCHS members posed for a photograph in front of the Log Cabin in 1916. J&C Imaging will be there to take our photograph so don't be late. **This is a once-in-100 years opportunity!**



**Rain Date:** October 4, 5:30 p.m.

**Support the  
Riley County Historical Museum  
through its next 100 Years as a  
Life Member!**



In commemoration of the Museum's 100<sup>th</sup>, the Riley County Historical Society is offering Life Memberships for \$100.00 through December 31, 2016. (On January 1, 2017, life memberships will return to their normal price of \$300.00.)

If you would like to take advantage of this one time offer, please fill out and return the following information with your check (made out to the Riley County Historical Society) and mail to 2309 Claflin Road Manhattan, Kansas 66502.

\*\*\*\*\*

Name: \_\_\_\_\_

Address: \_\_\_\_\_

Telephone Number: \_\_\_\_\_

Email Address: (The RCHS does not share e-mail information with any outside party and we will not inundate you with e-mail.) \_\_\_\_\_

If this life membership is a gift, from whom is it given? \_\_\_\_\_

(We will notify those who receive a life membership as a gift.)



*The Riley County  
Historical Society and Museum  
2309 Claflin Road  
Manhattan, Kansas 66502*

Non-Profit Org.  
U.S. Postage  
PAID  
Permit No. 407  
Manhattan, KS  
66502

Return Service Requested

## **October Centennial Events**

Mark your calendar!

**Sunday, October 2nd**

**Pioneer Log Cabin in Manhattan's City Park, 4:00 p.m.**

Rephotography event rain date: October 4th, 5:30 p.m.

**Wednesday, October 5th**

**Pottorf Hall, 1710 Avery Drive, CiCo Park, 7:00 p.m.**

Come celebrate the 100th anniversary of the Riley County Historical Museum. The birthday party is free and everyone is invited to attend.

**Thursday, October 13th, Riley County Historical Museum,  
2309 Claflin Road, Manhattan**

New exhibit: "Celebrating 100 Years of History and Heritage: The Riley County Historical Museum." This exhibit will run through 2017.